

Rod End Ball Joints (Male)

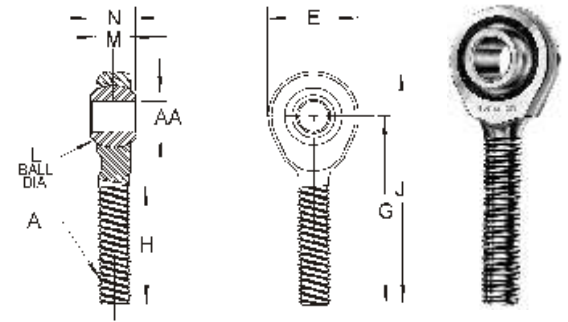
Bearing Raceway - Locked in by annular groove-trunnion design. Made of fiber reinforced nylon.

Outer Member (Housing) - Low carbon steel, plated plus dichromate treated for corrosion resistance.

Spherical Ball - Precision make from selected low carbon steel-case hardened - file hard. Plated plus dichromate treated for corrosion resistance.

Left Hand Thread - Available with left hand thread in most sizes. Marked for easy user identification.

Only Available Fully Assembled



Dimensions

| Auveco Part No. | Thread Size (A) | AA | E | G | H | J | L | M | N | Unit Pkg. | Thread |
|-----------------|-----------------|----------------|-------|-------|-------|-------|-------|------|------|-----------|--------|
| 12268 12269 | 10-32 | .189 .191 | .625 | 1.250 | .750 | 1.562 | .438 | .250 | .312 | 1 1 | R L |
| 12270 12271 | 1/4-28 | .250 .252 | .750 | 1.562 | 1.000 | 1.937 | .516 | .281 | .375 | 1 1 | R L |
| 12021 12272 | 5/16-24 | .3125 .3145 | .875 | 1.875 | 1.250 | 2.312 | .625 | .344 | .437 | 1 1 | R L |
| 12022 12273 | 3/8-24 | .375 .377 | 1.000 | 1.937 | 1.250 | 2.437 | .719 | .406 | .500 | 1 1 | R L |
| 12485 | 7/16-20 | .4395 .4375 | 1.125 | 2.125 | 1.312 | 2.687 | .812 | .437 | .562 | 1 | R |
| 12023 12274 | 1/2-20 | .500 .502 | 1.312 | 2.437 | 1.500 | 3.094 | .938 | .500 | .625 | 1 1 | R L |
| 12024 | 5/8-18 | .625 | 1.500 | 2.625 | 1.625 | 3.375 | 1.125 | .562 | .750 | 1 | R |
| 12486 | 3/4-16 | .752 .750 | 1.750 | 2.875 | 1.750 | 3.750 | 1.312 | .687 | .875 | 1 | R |

Rod End Ball Joints (Female)

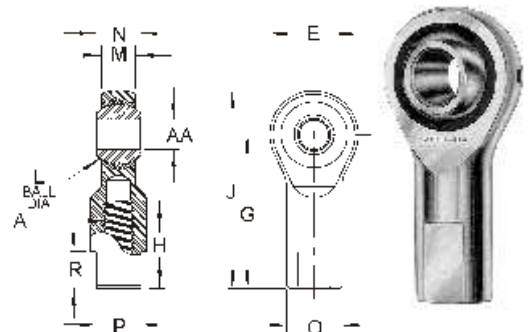
Bearing Raceway - Locked in by annular groove-trunnion design. Made of fiber reinforced nylon.

Outer Member (Housing) - Low carbon steel, plated plus dichromate treated for corrosion resistance.

Spherical Ball - Precision make from selected low carbon steel-case hardened - file hard. Plated plus dichromate treated for corrosion resistance.

Left Hand Thread - Available with left hand thread in most sizes. Marked for easy user identification.

Only Available Fully Assembled



Dimensions

| Auveco Part No. | Thread Size (A) | AA | E | G | H | J | L | M | N | O | P | R | Unit Pkg. | Thread |
|-----------------|-----------------|----------------|-------|-------|-------|-------|-------|------|------|-------|-------|-------|-----------|--------|
| 12025 12276 | 10-32 | .189 .191 | .625 | 1.062 | .562 | 1.375 | .438 | .250 | .312 | .406 | .312 | .406 | 1 1 | R L |
| 12026 12277 | 1/4-28 | .250 .252 | .750 | 1.312 | .750 | 1.687 | .516 | .281 | .375 | .469 | .375 | .406 | 1 1 | R L |
| 12027 12278 | 5/16-24 | .3125 .3145 | .875 | 1.375 | .750 | 1.812 | .625 | .344 | .437 | .500 | .437 | .500 | 1 1 | R L |
| 12028 12279 | 3/8-24 | .375 .377 | 1.000 | 1.625 | .937 | 2.125 | .719 | .406 | .500 | .687 | .562 | .562 | 1 1 | R L |
| 12487 | 7/16-20 | .4395 .4375 | 1.125 | 1.812 | 1.032 | 2.375 | .812 | .437 | .562 | .750 | .625 | .625 | 1 | R |
| 12029 12280 | 1/2-20 | .500 .502 | 1.312 | 2.125 | 1.187 | 2.781 | .938 | .500 | .625 | .875 | .750 | .687 | 1 1 | R L |
| 12281 | 5/8-18 | .625 | 1.500 | 2.500 | 1.500 | 3.250 | 1.125 | .562 | .750 | 1.000 | .875 | .875 | 1 | R |
| 12488 | 3/4-16 | .752 .750 | 1.750 | 2.875 | 1.562 | 3.750 | 1.312 | .687 | .875 | 1.125 | 1.000 | 1.000 | 1 | R |