



14255

(Honda: 75522-611-0000;
Mazda: 9991-00-412;
Mitsubishi: MS-480001)
Black Nylon

#8 Screw Size
9.5mm Wide, 9.5mm Long
Snaps Into 7mm x 7mm Hole

UNIT PACKAGE: 50



14287

(90656-671-6310M1)
Natural Nylon

#14 (1/4") Screw Size
13mm Wide, 15mm Long
Snaps Into 8.5mm x 10.5mm Hole

UNIT PACKAGE: 50

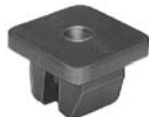


19117

(91619-SM4-003,
91619-SM4-0030)
Natural Nylon

Center Pillar Garnish
Moulding (Oval) Screw Grommet
#4 Screw Size
Odyssey & Accord Wagon
1991-On

UNIT PACKAGE: 25



20350

(90866-SAO-000)
Natural Nylon

Door Trim
Nylon Nut
#4 Screw Size
Head Size: 13mm x 13mm
Stem Length: 7mm
Civic
1998 - On

UNIT PACKAGE: 25



14294

(90675-SA6-0030)
Natural Nylon

Screw Grommet
With Sealer
#6 Screw Size
15mm Wide, 15mm Long
Stem Length: 12mm
Snaps Into 7mm x 7mm Hole

UNIT PACKAGE: 15



14313

(Honda:
90662-671-0030;
Mazda: 9991-00-503;
Nissan: 68425-H5000)
Natural Nylon

#10 Screw Size
17mm Wide
17mm Long
Snaps Into 8mm x 8.5mm Hole
Also For Mazda & Nissan

UNIT PACKAGE: 25



20351

(90666-SD9-000)
Natural Nylon

Nylon Nut
#14 (M6.3) Screw Size
Head Size: 16mm x 16mm
Stem Length: 8mm
CR-V
1997 - On

UNIT PACKAGE: 25

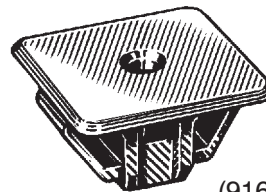


14296

(90668-688-0030)
Natural Nylon

Screw Grommet
With Sealer
#6 Screw Size
11mm Wide, 14mm Long
Stem Length: 10mm
Snaps Into 7mm x 10mm Hole

UNIT PACKAGE: 25

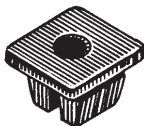


17609

(91635-SM4-003)
Black Nylon

Headlight To Grille
Spacer Bracket Grommet
#10 Screw Size
Honda Accord
1990-On

UNIT PACKAGE: 10



17058

(90676-SA7-003)
Natural Nylon

Headlight Adjusting
Screw Nut
M5-.8 Screw Size
Prelude & Accord 1986-On

UNIT PACKAGE: 25



14274

(Honda: 75521-611-0000;
Mazda: 9991-00-601;
Nissan: 96706-P0105
Toyota: 90189-06010)
Natural Nylon

#10 Screw Size
13mm Wide, 13mm Long
Snaps Into 8.5mm x
8.5mm Hole

UNIT PACKAGE: 25



20445

(91637-SE3-003)
Natural Nylon

Trim Pillar Garnish
Screw Grommet
M3.5 (#6) Screw Size
Head Size: 13mm x 17
CRV
1997 - On

UNIT PACKAGE: 15