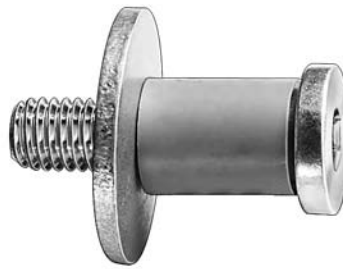




18914
Not Supplied
By O.E.M.
PVC Plastic

Door Lock Striker Bushing
1/2" I.D., 11/16" O.D.
7/8" Long
Ford 1972-On
UNIT PACKAGE: 50



18892
(D2AZ-6522008-A)

Door Lock Striker
Bolt Assembly
7/16"-14 Thread
Cars 1980-73
E100/350 Vans
(Back Door) 1986-80
UNIT PACKAGE: 1



Not Actual Size

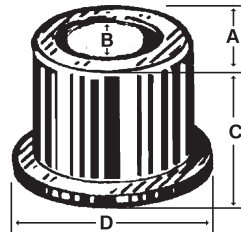
19594
(D9ZZ-6643030-AA)
Zinc Plated

Door Hinge Pin
Pin Diameter: 11/32"
Length Under Head: 3-3/8"
Head Diameter: 9/16"
Mustang 1993 - 79
Tempo & Topaz 1994 - 90
Capri 1986 - 80



18890
(E9AZ-5422008A)

Door Lock Striker
Bolt Assembly
M10-1.50 Thread
Ford, Mercury & Mustang
1991-83
Truck E100/300 & F100/350
1980-On
UNIT PACKAGE: 1



Door Hinge Bushings

Auveco Part No.	Dimensions			
	O.D. "A"	I.D. "B"	Height "C"	Flange O.D. "D"
14550	27/64"	11/32"	19/64"	19/32"
14551	31/64"	11/32"	19/64"	19/32"



14550
(D1AZ-6522841A)
Ford 1973-On
UNIT PACKAGE: 25



14551
(D90Z-6522841A)
Ford 1973-On
UNIT PACKAGE: 25



20346
Not Available
From O.E.M.
Zinc & Yellow

Door Hinge Pin
Length: 3-1/2"
Pin Dia: 11/32"
Knurl Dia: .358"
Head O.D.: 9/16"

Use With Auveco 8829 E-Type Retaining Ring

Ranger, F150,
F250 & F350
1998 - 80

UNIT PACKAGE: 5



18891
(E9FZ-5822008-A)

Door Lock Striker Bolt Assembly
7/16-14 Thread
Tempo, Topaz, Escort, Tracer,
Taurus, Sable, T-Bird, Cougar,
Lincoln, Aerostar, Bronco II,
Explorer & Ranger
1983-On

UNIT PACKAGE: 1