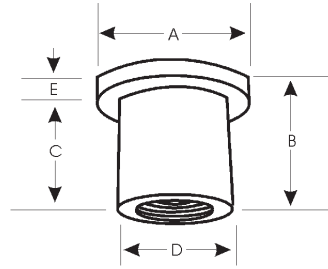


Sec. 9

RUBBER NUT INSERTS

Neoprene Rubber With A Brass Nut



Part Number	Unit Pkg.	Thread	(A) Head Dia.	(B) Overall Length	(C) Shank Length	(D) Shank Dia.	(E) Head Height	Hole Size	Grip Range
19911	25	#6-32	.433	.496	.441	.311	.055	5/16	.015-.156
19915	25	1/4-20	.630	.630	.579	.500	.051	1/2	.015-.110
19917	15	5/16-18	.870	.721	.595	.626	.126	5/8	.015-.156
19918	15	M5-.8	.551	1.570	1.519	.375	.051	3/8	.808-1.182
19919	25	M5-.8	.551	.847	.811	.375	.036	3/8	.311-.449
19920	25	M5-.8	.551	.670	.631	.375	.039	3/8	.034-.233
19921	25	M5-.8	.500	.556	.520	.375	.036	3/8	.015-.193
19922	25	M6-1.0	.630	.630	.579	.500	.051	1/2	.015-.110
19923	25	M6-1.0	.642	1.052	.973	.500	.079	1/2	.252-.453

TUBULAR TYPE NUTS (LISTED BY STUD SIZE) ILLUSTRATIONS ACTUAL SIZE



3136

Phosphate

1/16" Stud Size
Panel Range: .025"-.125"
Fits Into .086" Hole

UNIT PACKAGE: 100



3776

Phosphate

3/32" Stud Size
Panel Range: .032"-.040"
Fits Into 1/8" Hole

UNIT PACKAGE: 100



13963

Nylon

7/64" Stud Size
Barrel Length: 29/64"
Head Dia.: 1/4"
Head Thick: 1/32"
Fits Into 3/16" Hole

UNIT PACKAGE: 100



13961

Nylon

1/16" Stud Size
Panel Range: 7/32"
Fits Into 9/64" Hole

UNIT PACKAGE: 50



3137

Phosphate

3/32" Stud Size
Panel Range: .025"-.175"
Fits Into 1/8" Hole

UNIT PACKAGE: 100



11293

(375890-S102)

Green

With Sealer

1/8" Stud Size
Panel Range: .035"-.045"
Fits Into 3/16" Hole

UNIT PACKAGE: 50



13962

Nylon

5/64" Stud Size
Barrel Length: 7/32"
Head Dia.: 7/32"
Head Thick: 3/64"
Fits Into 5/32" Hole

UNIT PACKAGE: 50



2596

Phosphate

3/32" Stud Size
Panel Range: .031"-.041"
Fits Into 1/8 x 5/32" Hole

UNIT PACKAGE: 100



13964

Nylon

1/8" Stud Size
Barrel Length: 11/32"
Head Dia.: 15/64"
Head Thick: 1/32"
Fits Into 11/64" Hole

UNIT PACKAGE: 50